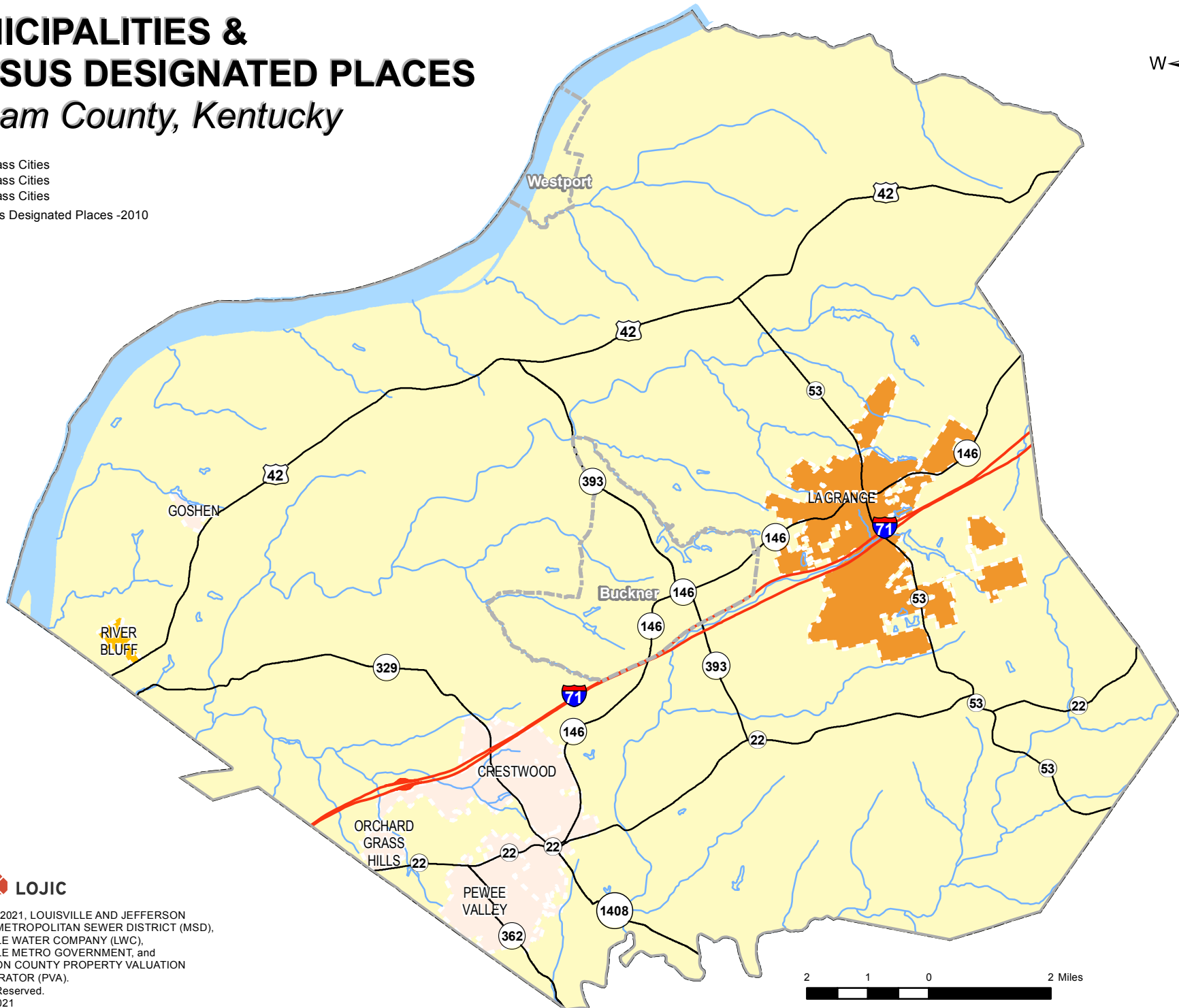


# MUNICIPALITIES & CENSUS DESIGNATED PLACES

## Oldham County, Kentucky



- 4th Class Cities
- 5th Class Cities
- 6th Class Cities
- Census Designated Places - 2010



Copyright (c) 2021, LOUISVILLE AND JEFFERSON COUNTY METROPOLITAN SEWER DISTRICT (MSD), LOUISVILLE WATER COMPANY (LWC), LOUISVILLE METRO GOVERNMENT, and JEFFERSON COUNTY PROPERTY VALUATION ADMINISTRATOR (PVA).  
 All Rights Reserved.  
 Date: 11/27/2021

