

Creating a Map Series from a Point Layer

This exercise shows you how to make a series of maps for a Point Layer, in this case, Louisville Free Public Libraries. A sample of the final layout for this map is on the last pages of the exercise.

Open **ArcMap** in a Citrix connection. In the **ArcMap – Getting Started** window, go to **Existing Maps > Browse for more...** and select **Libraries.mxd** from the **H:/DataDrivenPages** directory.

Creating Data Driven Pages

To open the Data Driven Pages toolbar, go to **Customize > Toolbars** and select **Data Driven Pages**. (Figure 1)



Figure 1 - Data Driven Pages toolbar

On the **Data Driven Pages** toolbar, use the first button to open the **Setup Data Driven Pages** property pages. (Figure 2)

Check Enable Data Driven Pages.

Choose the data frame that contains your index layer or the **Layers** Data Frame.

For Layer, choose the index layer. In this exercise, select **Louisville Free Public Libraries**.

For the Name field, choose the field name '**LFPL_NAME**'

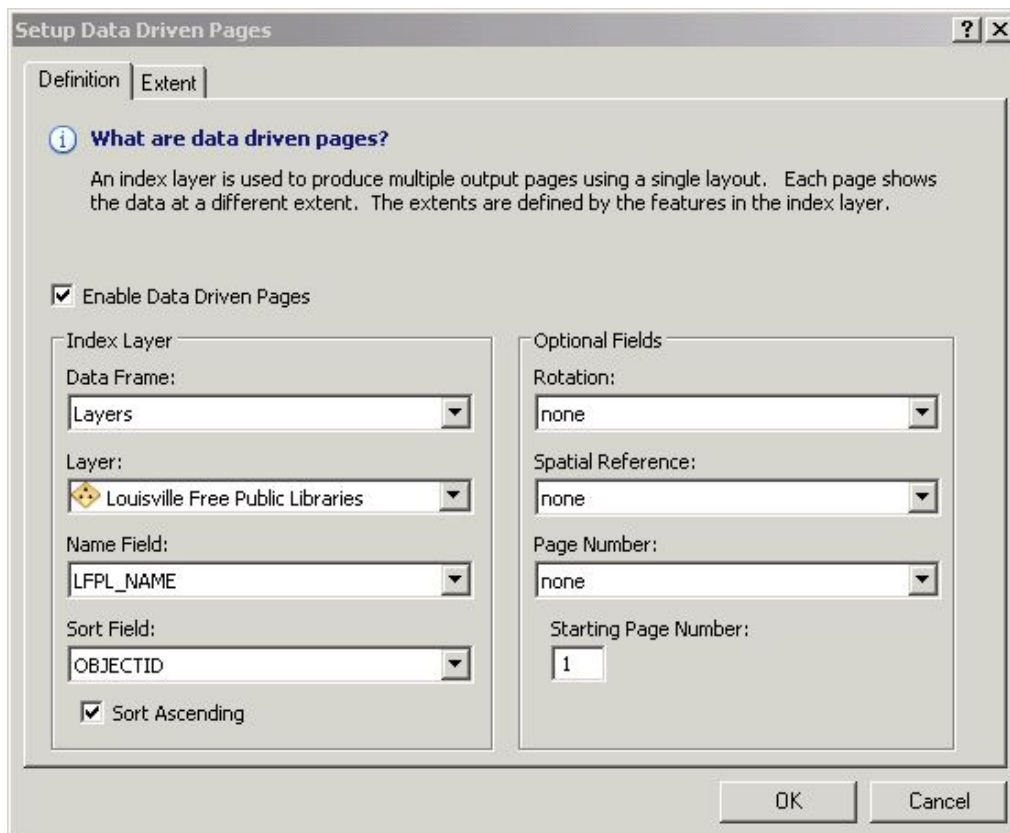


Figure 2 - Setup Data Driven Pages, Definition tab

Switch to the **Extent** tab. (Figure 3)

Select **Center and Maintain Current Scale**. This will keep a fixed scale with the current map scale.

Click **OK**. This will zoom to the first page in your index layer.

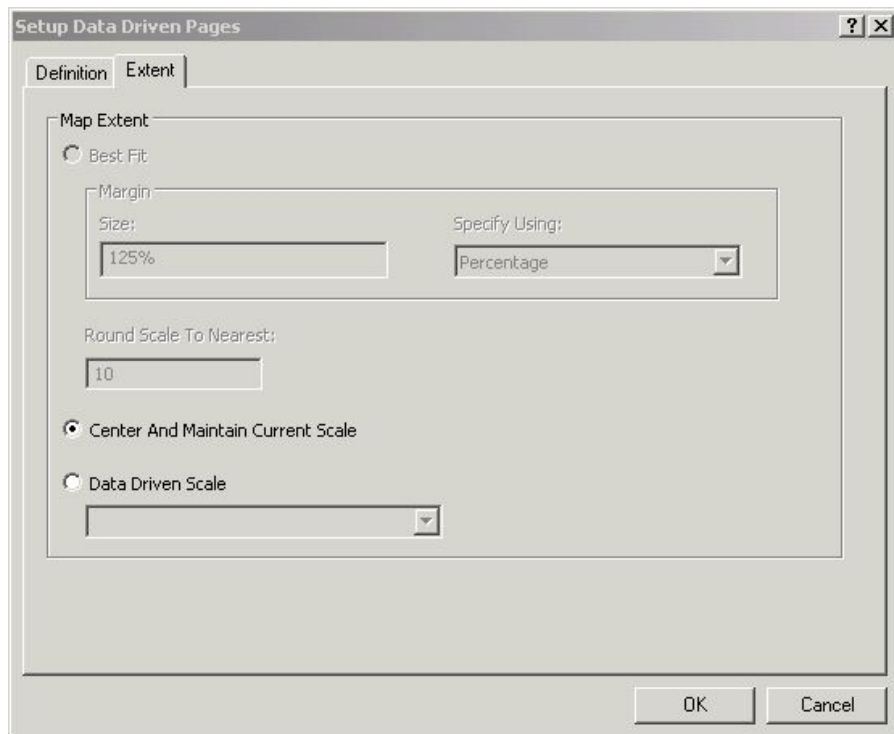


Figure 3 - Setup Data Driven Pages, Extent tab

Creating Map Series Layout

Click on the **Layout** button in the lower left corner to start working on the map layout. Make sure the scale is still set to **1:1,200**.



Figure 4 - Standard toolbar

On the **Data Driven Pages** toolbar, step through some of your pages using the arrow buttons.

To make the **Library Name** the map title that will change automatically, go to the **Data Driven Pages** toolbar, click on the **Page Text** button and select **Data Driven Page Name**. (Figure 5)

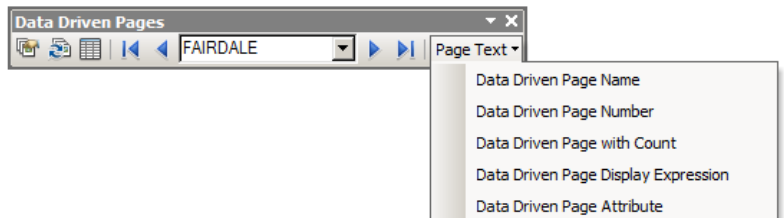


Figure 5 - Data Driven Page toolbar

The **Library Name** will appear in a text box in the middle of the page. Move it to the **center top of the page**. Right click on the **Library Name**, click on Properties and **Center** the text. **Click Apply**. **Click** on the **Change Symbol** button to make the text **bold**, and **increase the text size to 18**. **Click OK**. You may need to move the title to center it on the page.

Setting a Page Definition Query

In order to display the corresponding feature in the **Location Map** that is centered in the main map, a **Page definition query** needs to be set up. **Right Click** on the **Location Maps** Data Frame and **click** on **Activate**. **Right click** on the **Louisville Free Public Library** in the **Location Map** data frame, select **Properties** and go to the **Definition Query** tab. When Data Driven Pages is enabled, the **Page Definition query** button will be available in the tab.

Click on the **Page Definition** button. Set up the query as show in Figure 6. **Click OK**. **Click OK** in the **Definition Query** window.

On the **Data Driven Pages** toolbar, step through the pages using the arrow buttons.

Save the mxd.

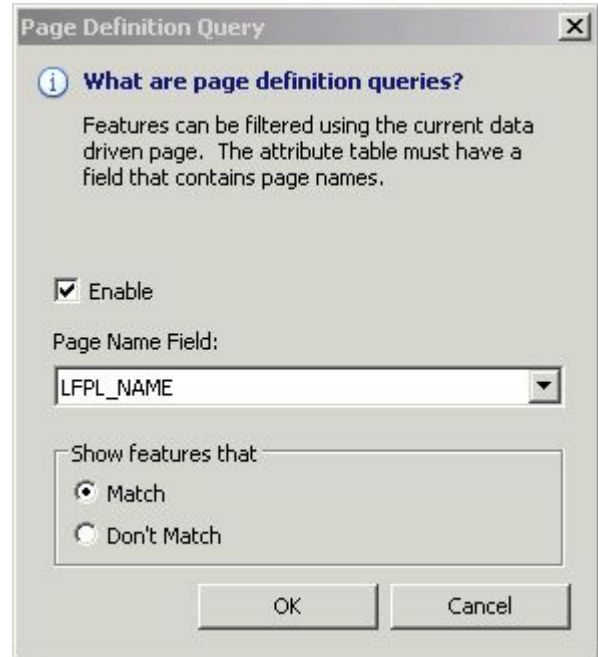


Figure 6 - Page Definition Query

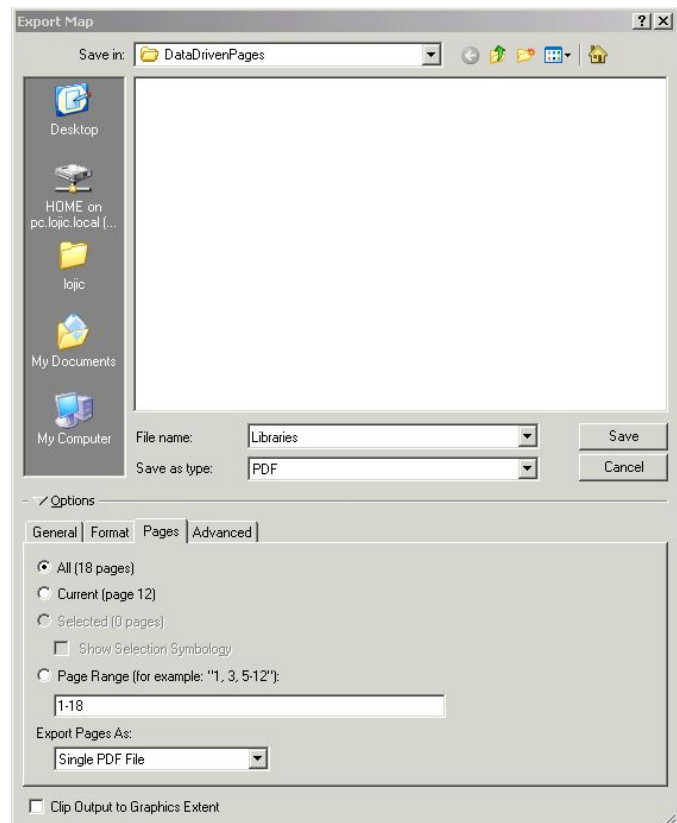
Exporting the Map Series

The map series can be exported as individual maps or as a multi-page document. In this exercise, you will export **All** the pages of this series into a **Single PDF File**.

Click on the **Main** menu **File>Export Map**. **Save** the export file **In** the **H:/DataDrivenPages** directory. Use the pull down to **Save as type PDF**. **Click** on the **Pages** tab in Options. **Click** on the **All (18 pages)** button and in **Export Pages As**, use the pull down menu to select **Single PDF Files**. See Figure 7.

Click Save and the PDF will be created.

Save the mxd. **Close** the mxd if you are not doing the optional challenge.



Optional Challenge:

Adding Static Text to Dynamic Text

To add the text “**LIBRARY**” after the changing **Library Name**, **right click** in the **Library Name**, select **Properties** and click on the **Text** tab.

In the **Text** window, notice the html code enabling the dynamic text:

```
<dyn type="page" property="name"/>
```

In all CAPITAL LETTERS, type the word “**LIBRARY**” after the dynamic text code, **leaving a space** between the html code and the word “**Library**”. (Figure 8)

Click **OK**.

Save the mxd.

Adding the Current Date

In the **Main** menu, click on **Insert>Dynamic Text>Current Date**. (Figure 9) The current date will appear in a text box in the **middle of the layout**. **Move** it down into the margin and **delete** the **Map Created** date note.

Double right click on the **Current Date** note and **change** the word “**Date:**” to “**Map Created:**” The date will now automatically update when you open the mxd.

Add Text from Attributes

Click **Insert>Text**. **Double right click** on the text box that will appear in the middle of the layout. Add the following text:

```
<dyn type="page" property="LFPL_ADD"/>  
<dyn type="page" property="LFPL_LOC"/>  
<dyn type="page" property="TELEPHONE"/>
```

Click on the **Change Symbol** button and change the text size to **10**. Click **OK** to both windows. **Move** the text box between the scale and logo. Click through the pages to see the information change. **Save** and **close** the mxd.

Figure 7 - Export Map window

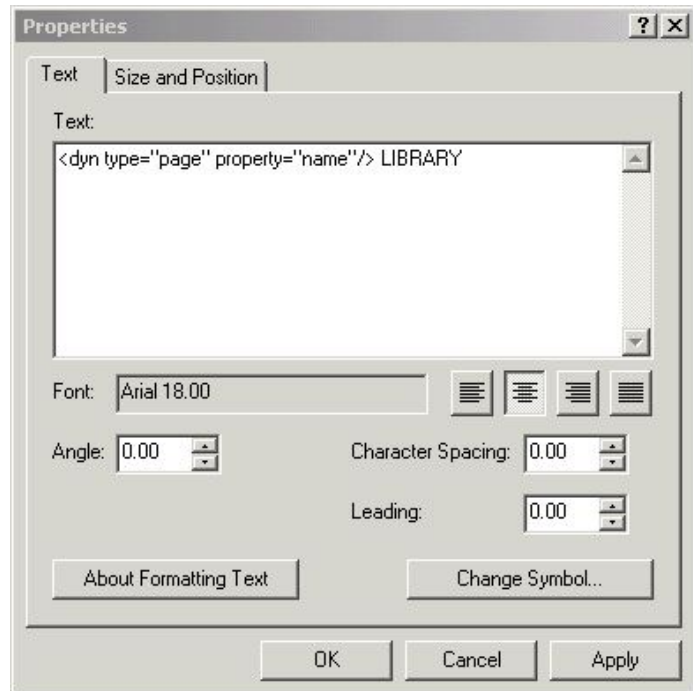


Figure 8 - Adding Static Text with Dynamic Text

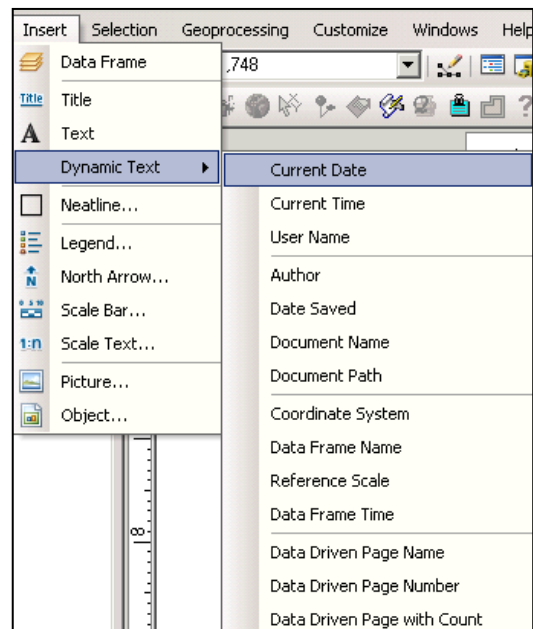
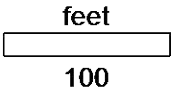
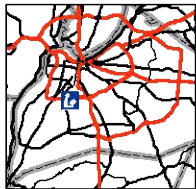


Figure 9 - Add Current Date

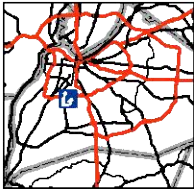
IROQUOIS



Copyright (c) 2017, LOUISVILLE AND JEFFERSON COUNTY METROPOLITAN SEWER DISTRICT (MSD), LOUISVILLE WATER COMPANY (LWC), LOUISVILLE METRO GOVERNMENT and JEFFERSON COUNTY PROPERTY VALUATION ADMINISTRATOR (PVA). All Rights Reserved.

Sample Map for Exercise 1 – Optional Challenge

IROQUOIS LIBRARY



feet
100

Map Created: 3/22/2017

601 WEST WOODLAWN AVE
LOUISVILLE KY 40215
502-574-1720



Copyright (c) 2017, LOUISVILLE AND JEFFERSON COUNTY METROPOLITAN SEWER DISTRICT (MSD), LOUISVILLE WATER COMPANY (LWC), LOUISVILLE METRO GOVERNMENT and JEFFERSON COUNTY PROPERTY VALUATION ADMINISTRATOR (PVA). All Rights Reserved.