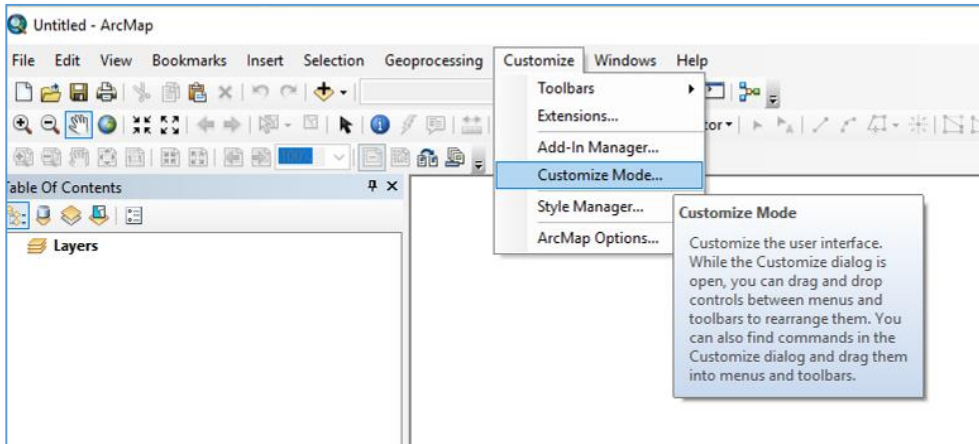


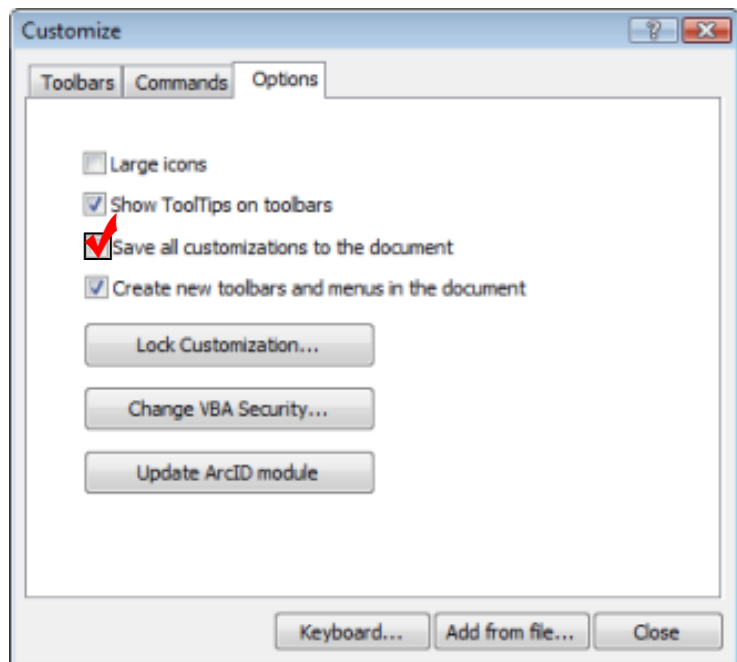
How to Save Toolbars in an MXD

Sometimes users may want to save specific toolbars and their locations in an mxd instead of using the default toolbars and locations that are used whenever a user opens any mxd.

In ArcMap, go to **Customize>Customize Mode**.



In the Customize window, go to the **Options** tab. **Check on Save all customizations to the document**. This saves your toolbars settings in the mxd and bypasses the default settings.



Click [here](#) to learn more.